

# Kulturhuset

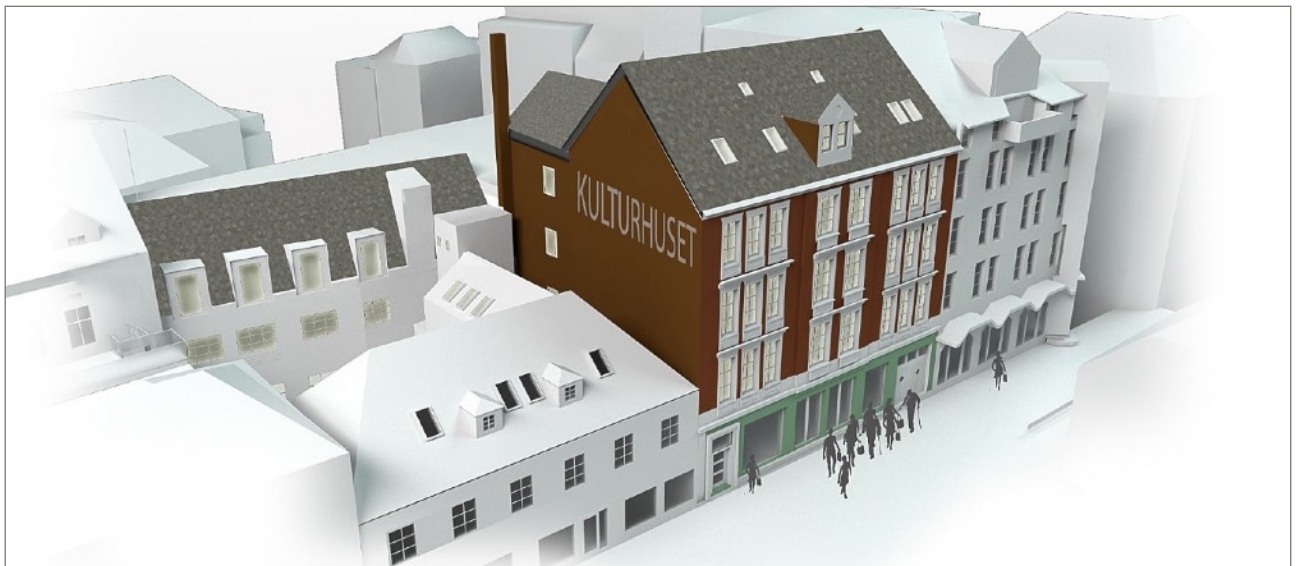
---

## **TECHNICAL SPECIFICATIONS**

*KULTURHUSET I BERGEN*

*VASKERELVEN 8*

*5014 Bergen*



## Contact:

### Technical manager:

Runar Gåsterud  
e: [runar@kulturhusetibergen.no](mailto:runar@kulturhusetibergen.no)  
ph: +47 991 24 526

### Booking:

Liam Folmann Østvik  
e: [liam@kulturhusetibergen.no](mailto:liam@kulturhusetibergen.no)  
ph: +47 907 18 015

## Content:

- 1:.....Load in
- 2:.....Stage information
  - 2.1: «Hovedscenen»
  - 2.2: «Lillesalen»
  - 2.3: «Galleriet»
- 3:.....Sound equipment
  - 3.1: PA systems
  - 3.2: Monitors
  - 3.3: Mixers
  - 3.4: Wireless
  - 3.5: Microphones
- 4:.....AV equipment
- 5:.....Lighting equipment
  - 5.1: Fixtures
  - 5.2: Mixers
  - 5.3: Hazers
- 6:.....Backline

## 1: Load in

Load in happens from the parking spot outside of the Kiwi store down the street. It fits one truck at a time. *This is only used for unloading, not permanent parking!*

**Please contact us with details about your arrival, so that we can make sure the space is available, as the spot is used by surrounding neighbors.**

Load in is from street level through either main entrance door (flat push approx 65m), or through our backyard (35m push downhill and uphill ramp). Through the backyard you'll find the entrance door, which leads you right in front of our main stage.

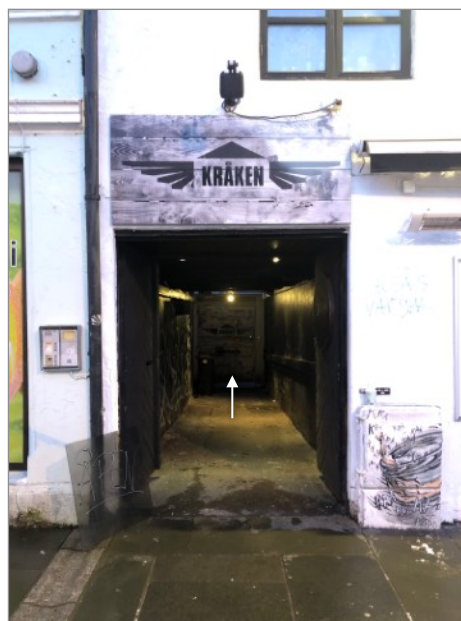


Parking spot

1: Backyard entrance 2: Main door



Main door



Entrance backyard



Backyard

## 2: Stage information

Kulturhuset i Bergen consists of three floors with three venues suitable for a variety of genres and expressions.

*PLEASE NOTE THAT all equipment listed here may be used in ongoing productions, and may not be available! Contact us about your needs!*

### 2.1: Hovedscenen

|                   |  |                        |
|-------------------|--|------------------------|
| Capacity:         | 650 pax  |                        |
| Load in:          | Ground level floor   |                        |
| Stage dimensions: | 8.5m wide<br>4m deep<br>3m tall roof at highest point<br>2.4m tall roof at lowest point<br>60cm stage height                     |                        |
| House sound:      | See chapter 3  | FOH 10m from stage     |
| House lights:     | See chapter 5  |                        |
| Power:            | 2x 63a 230v BLUE located upstage center<br>1x 16a 220/240v Schuko shared on 3 outlets on stage<br>4x 16a 220/240v Schuko in roof |                        |
| Backstage:        | 38m2<br>Private toilet with shower   | No washing machine     |
| Wifi:             | SSID: KhiB Guest   | Password: KulturBergen |

## 2.2: Lillesalen

|                          |  |                              |
|--------------------------|--|------------------------------|
| <b>Capacity:</b>         | 300 pax  |                              |
| <b>Load in:</b>          | Through elevator   |                              |
| <b>Stage dimensions:</b> | Stage is built to spec according to act, using Nivtec risers.                                    | 40cm and 60cm legs available |
| <b>House sound:</b>      | See chapter 3  |                              |
| <b>House lights:</b>     | See chapter 5  |                              |
| <b>Power:</b>            | 2x 63a 230v BLUE<br>1x 16a 220/240v Schuko shared on 4 outlets<br>6x 16a 220/240v Schuko in roof |                              |
| <b>Backstage:</b>        | 35m2   | No washing machine           |
| <b>Wifi:</b>             | SSID: KhiB Guest   | Password: KulturBergen       |

## 2.3: Galleriet

|                          |  |   |
|--------------------------|--|---|
| <b>Capacity:</b>         | 300 pax  |   |
| <b>Load in:</b>          | Through elevator   |   |
| <b>Stage dimensions:</b> | Stage is built if needed, using Nivtec risers.                               | 40cm and 60cm legs available  |
| <b>House sound:</b>      | See chapter 3  |   |
| <b>House lights:</b>     | See chapter 5  |   |
| <b>Power:</b>            | 1x 63a 230v BLUE<br>2x 16a 220/240v Schuko<br>6x 16a 220/240v Schuko in roof |   |
| <b>Backstage:</b>        | 90m2   | With kitchen and private toilet. Kitchen may be used, but please arrange this in advance. |
| <b>Wifi:</b>             | SSID: KhiB Guest   | Password: KulturBergen  |

### 3: Sound equipment

Kulturhuset has two systems on hand for sound reinforcement. One is our collection of concert PA by Meyer Sound, and the other is an JBL column set for conferences and background music. This conference set up is running on Dante, with Sennheiser SpeechLine, 1x handheld wireless and 3x headset microphones.

#### 3.1: PA systems

| <b>Hovedsalen:</b> |                       |                                      |
|--------------------|-----------------------|--------------------------------------|
| Main               | Meyer Sound UPQ       | x 2                                  |
| Subs               | Meyer Sound 900 LFC   | x 4                                  |
| Delays             | Meyer Sound Ultra X40 | x 2                                  |
|                    | Meyer Sound UPQ       | x 2                                  |
| <b>Lillesalen:</b> |                       |                                      |
| Main               | Meyer Sound Ultra X40 | x 2, on stands                       |
| Subs               | Meyer Sound 750 LFC   | x 2, shared with 3rd floor if needed |
| Conference PA      | JBL CBT1000           |                                      |
| <b>Galleriet:</b>  |                       |                                      |
| Main               | Meyer Sound Ultra X40 | x 2, on stands                       |
| Conference PA      | JBL CBT1000           |                                      |

#### 3.2: Monitors

| <b>Venue</b> | <b>Wedge</b>            | <b>Amount</b>          |
|--------------|-------------------------|------------------------|
| Hovedsalen   | Turbosound TFM152M 15'' | x 6                    |
| Lillesalen   | Turbosound TFM152M 15'' | x 4                    |
| Galleriet    | -                       | Shares with Lillesalen |

### 3.3: Mixers

| Venue      | Console                   | Rack                  |
|------------|---------------------------|-----------------------|
| Hovedsalen | Allen & Heath dLive c3500 | A&H CDM48             |
| Lillesalen | Allen & Heath dLive c1500 | A&H CDM32             |
| Galleriet  | Midas M32r                | 16ch XLR analog multi |

### 3.4: Wireless

Our WL pack consists of 4x Shure SLX-D2 handheld with B58 capsule, and 4x Shure SLX-D1 Bodypack transmitters with Countryman ISOMAX headset microphones. These are only available on our main stage, Hovedscenen.  
823 - 832 / 863 - 865MHz

The previously mentioned Sennheiser Speechline is available in Lillesalen and Galleriet as part of a permanent install.

### 3.5: Microphones

| Mic                   | Amount                   |
|-----------------------|--------------------------|
| Shure SM58            | x 8                      |
| Shure Beta 58A        | x 16                     |
| Shure SM57            | x 12                     |
| Shure Beta 52A        | x 2                      |
| Shure BETA 91A        | x 2                      |
| Neumann KM184         | x 6 matched stereo pairs |
| Sennheiser e904       | x 8                      |
| Sennheiser e906       | x 2                      |
| Klark Teknik DN100 DI | x 16                     |

## 4: AV equipment

Hovedsalen has 2x *Epson EB-PU1008B* 8500 lumen, one in each end of the room. Rear side of the room has a screen that measures 170''. Stage has no installed screen.

Lillesalen has 1x *Epson EB-PU1008B* 8500 lumen with a short throw lens. The screen measures 170''.

In addition we have 1x mobile 130'' screen on stands.  
2x 86'' Sony TV screens on hydraulic stands.

## 5: Lighting equipment

Our main stage in Hovedsalen has a tube grid above stage. The room is fitted with several single tubes that allow for more lights to be hung in the room, above the audience. We've got LED's exclusively, and no dimmers in house.

Currently the other floors have no roof rig, but this will be installed in the future.

Our light package consists of:

### 5.1: Fixtures

| Fixture                    | Amount | Location                           |
|----------------------------|--------|------------------------------------|
| <i>Bright Norway XLED</i>  | x 22   | 4x Lillesal & 4x Galleri, 4x loose |
| <i>Bright Norway Xbaby</i> | x 20   | 2x Lillesal, 2x Galleri            |
| <i>Bright Norway Xbar</i>  | x 6    | Mainstage                          |
| <i>Martin Mac Aura</i>     | x 6    | Mainstage                          |
| <i>Martin Mac Era 300</i>  | x 4    | Mainstage                          |



## 5.2: Mixers

| Venue             | Console                | Splitter             |
|-------------------|------------------------|----------------------|
| <i>Hovedsalen</i> | GrandMA 3 Compact      | 1x Zero88 Splitter 8 |
| <i>Lillesalen</i> | Zero88 FLX S24         | -                    |
| <i>Galleriet</i>  | Shares with Lillesalen | -                    |

## 5.3: Hazers

| Venue             | Hazer                  |
|-------------------|------------------------|
| <i>Hovedsalen</i> | Jem Compact Hazer Pro  |
| <i>Lillesalen</i> | SG SDJ Mimetik XL      |
| <i>Galleriet</i>  | Shares with Lillesalen |

## 6: Backline

All backline is shared across the house, and may be used for different productions during your stay. Please contact us about your backline needs in advance!

| Guitar amps                     | Amount |
|---------------------------------|--------|
| Vox AC30 C2                     | 1      |
| Fender Twin Reverb, Tone Master | 1      |
| Ampeg SVT Classic               | 1      |
| Ampeg SVT-410 HLF Heritage      | 1      |

| <b>Drum set</b>                     | <b>Amount</b> |
|-------------------------------------|---------------|
| Gretsch Catalina Maple              |               |
| 22x18'' Kick                        | 1             |
| 14x6'' Snare                        | 1             |
| 8x7'' Rack                          | 1             |
| 10x7'' Rack                         | 1             |
| 12x8'' Rack                         | 1             |
| 14x14'' Floor                       | 1             |
| 16x16'' Floor                       | 1             |
|                                     |               |
| Tama Stage Master Boom Cymbal Stand | 4             |
| Tama Stage Master Snare Stand       | 2             |
| Iron Cobra 200 Hi-Hat Stand         | 1             |
| Iron Cobra 200 Kick Pedal           | 1             |
| Drum throne                         | 3             |
| Drum rug                            | 1             |
|                                     |               |
| <b>DJ</b>                           |               |
| Pioneer CDJ 3000                    | 4             |
| Pioneer DJM 900NXS2                 | 1             |
| Pioneer DJM A9                      | 1             |
| Technics SL 1210                    | 2             |
|                                     |               |
| <b>Stands</b>                       |               |
| Pulse KS200, keyboard stand         | 5             |
| Hercules, tall guitar stand         | 5             |
| K&M "Heli 2", low guitar stand      | 3             |

*Welcome to Kulturhuset i Bergen!*